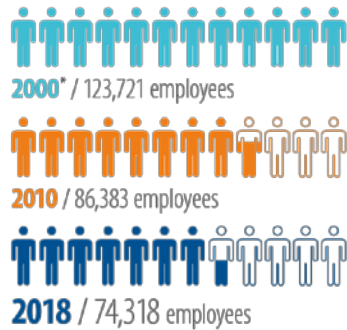


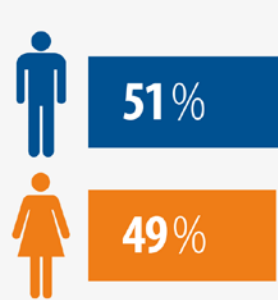
Government personnel



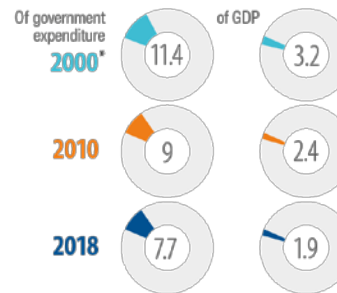
NUMBER OF PERSONNEL 2000–2018



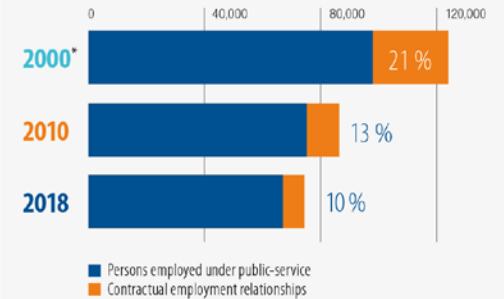
GENDER RATIO 2018



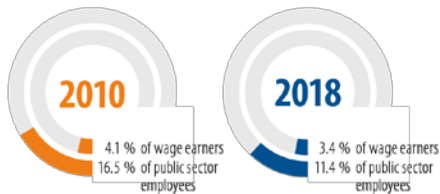
LABOUR COSTS AS A PERCENTAGE OF CENTRAL GOVERNMENT EXPENDITURE AND GDP 2000–2018, %



PERSONS EMPLOYED UNDER PUBLIC-SERVICE OR CONTRACTUAL EMPLOYMENT RELATIONSHIPS, 2000–2018, %



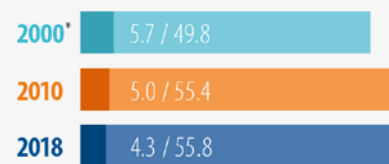
SHARE OF wage earners and public sector employees



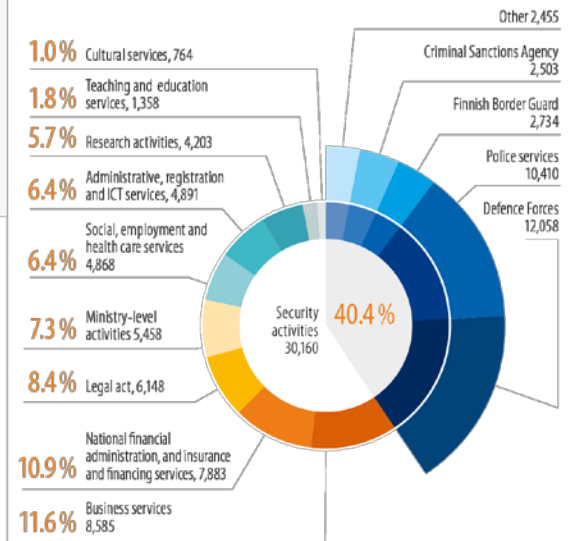
STATE AGENCIES STREERED BY THE MINISTRIES (performance agreements), 2018



LABOUR COSTS OF CENTRAL GOVERNMENT EXPENDITURE** 2000–2018, mrd. euro



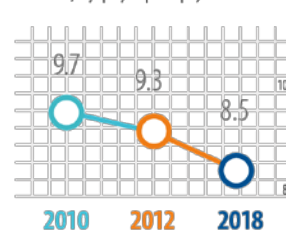
GOVERNMENT PERSONNEL BY TYPE OF AGENCY 2018, %



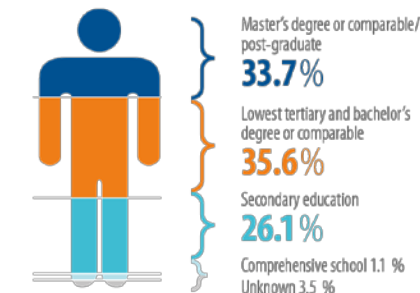
WELLBEING AT WORK 2010–2018



SICK LEAVE 2010–2018, days per year per employee



EDUCATION level and range of duties, 2018



* The figures for 2000 include universities, so they cannot be compared directly with the figures for other years.
** Inflation-adjusted to correspond to the 2018 price level.